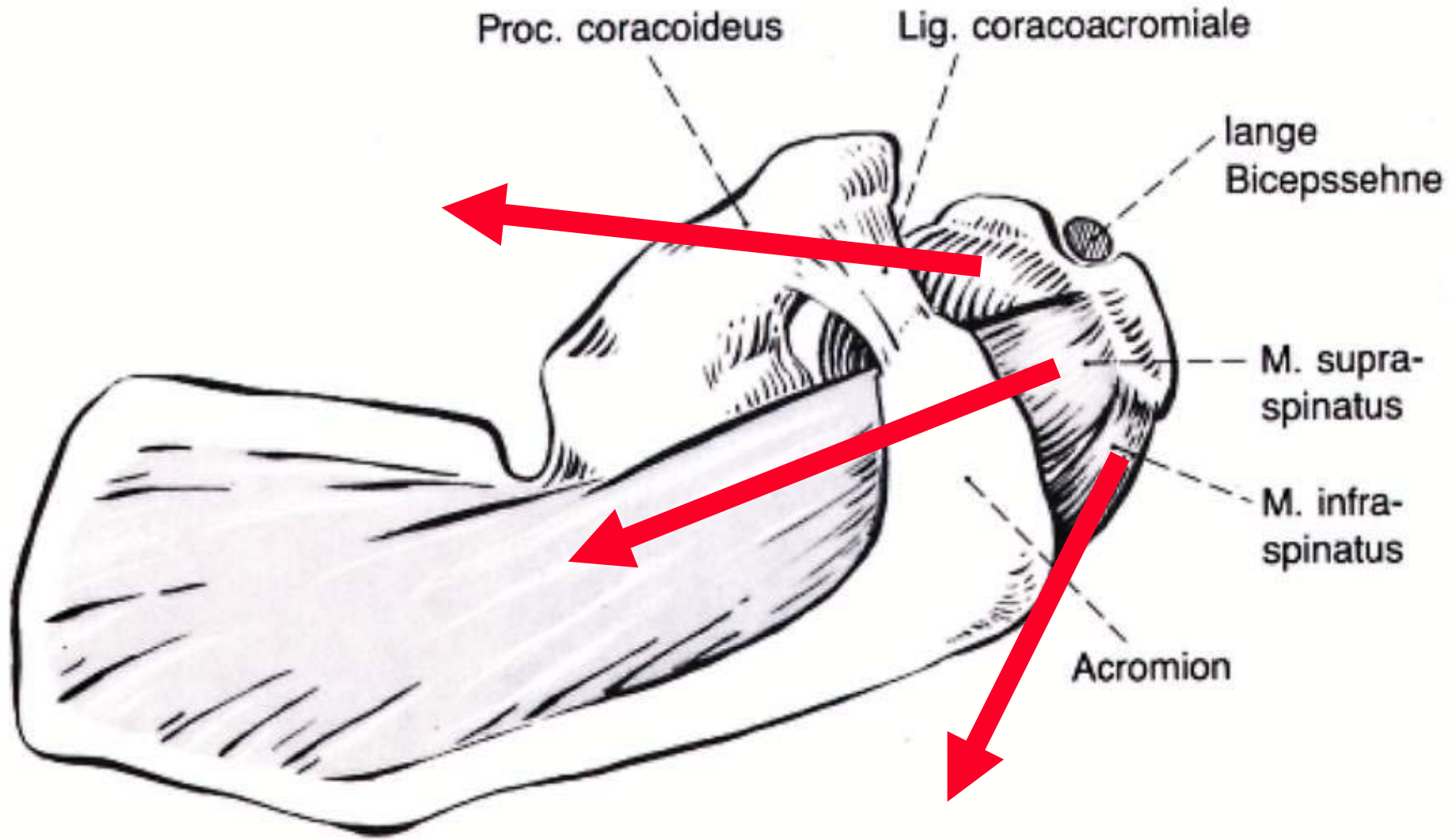


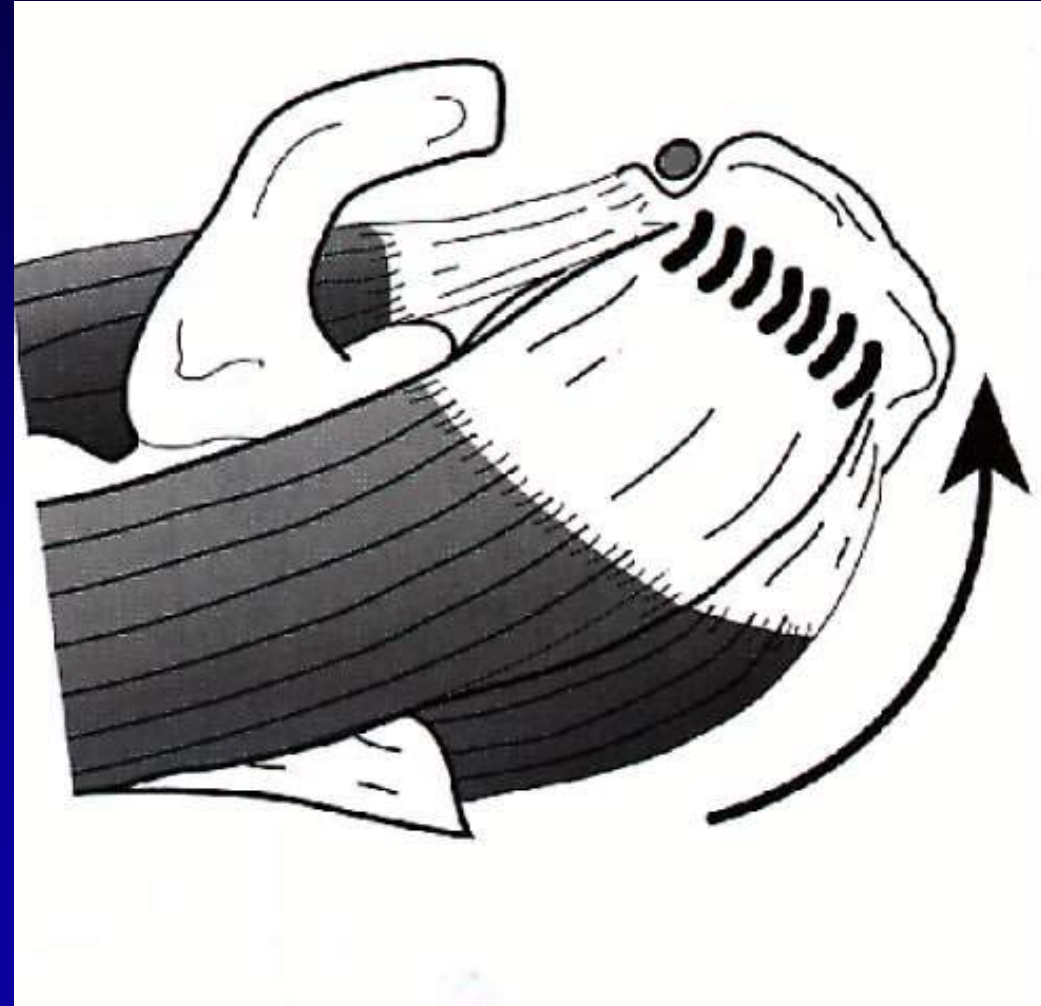
Auswahl klinischer Tests Subacromialraum

Schulterorthopädieausbildung Salzburg 2011

Leiter: Rainer Kluger



INNENROTATION



Innenrotation gegen Widerstand



Innenrotation gegen Widerstand

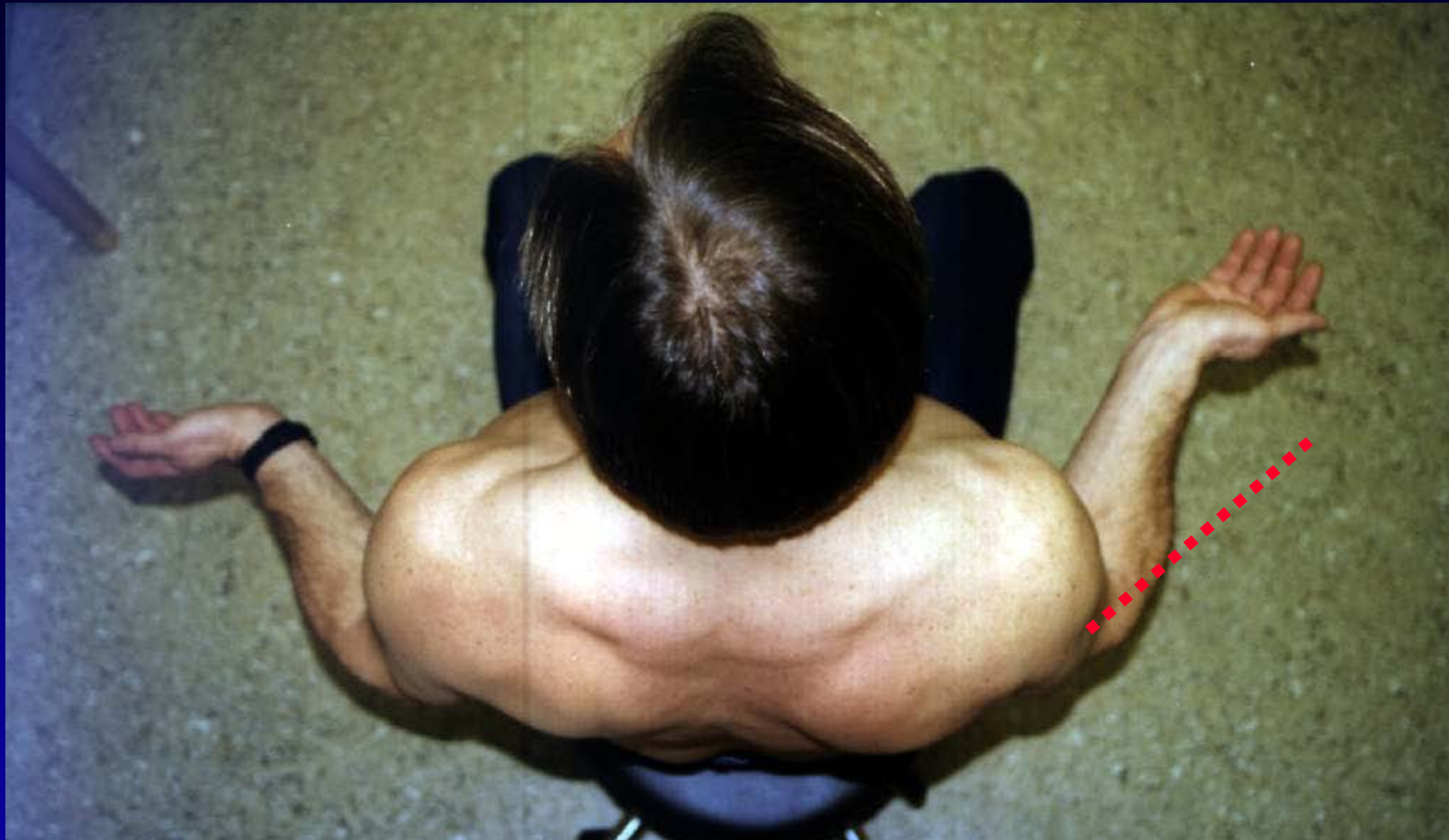


AUSSENROTATION





Aussenrotation gegen Widerstand

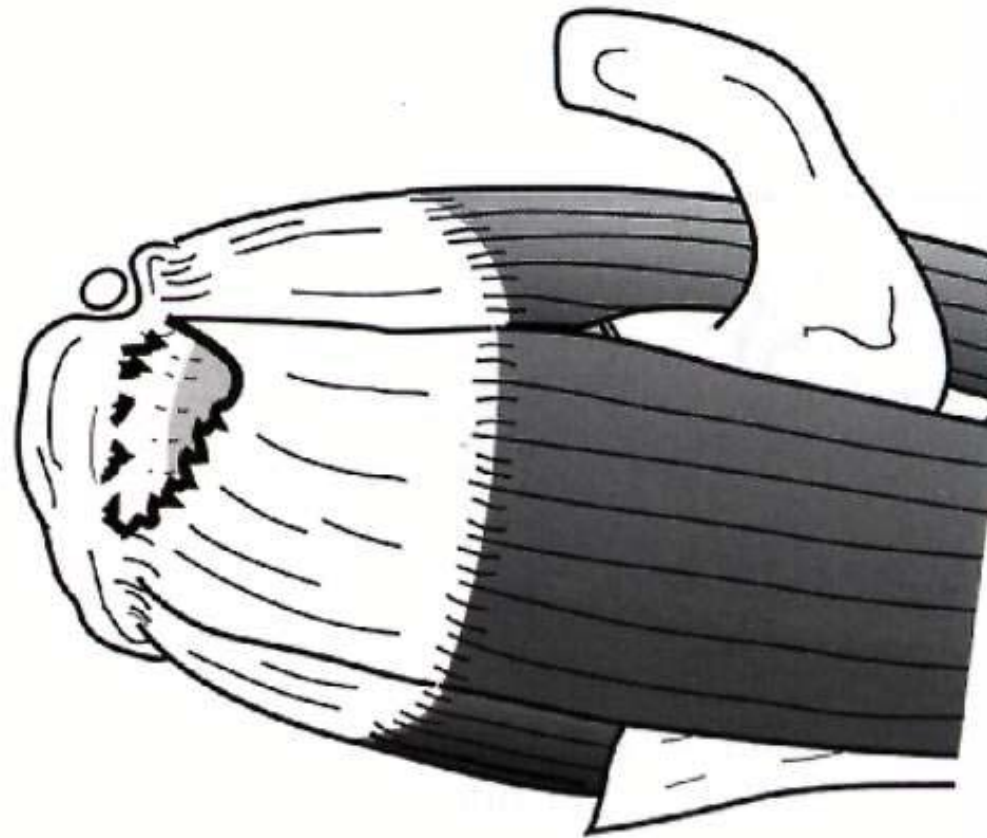
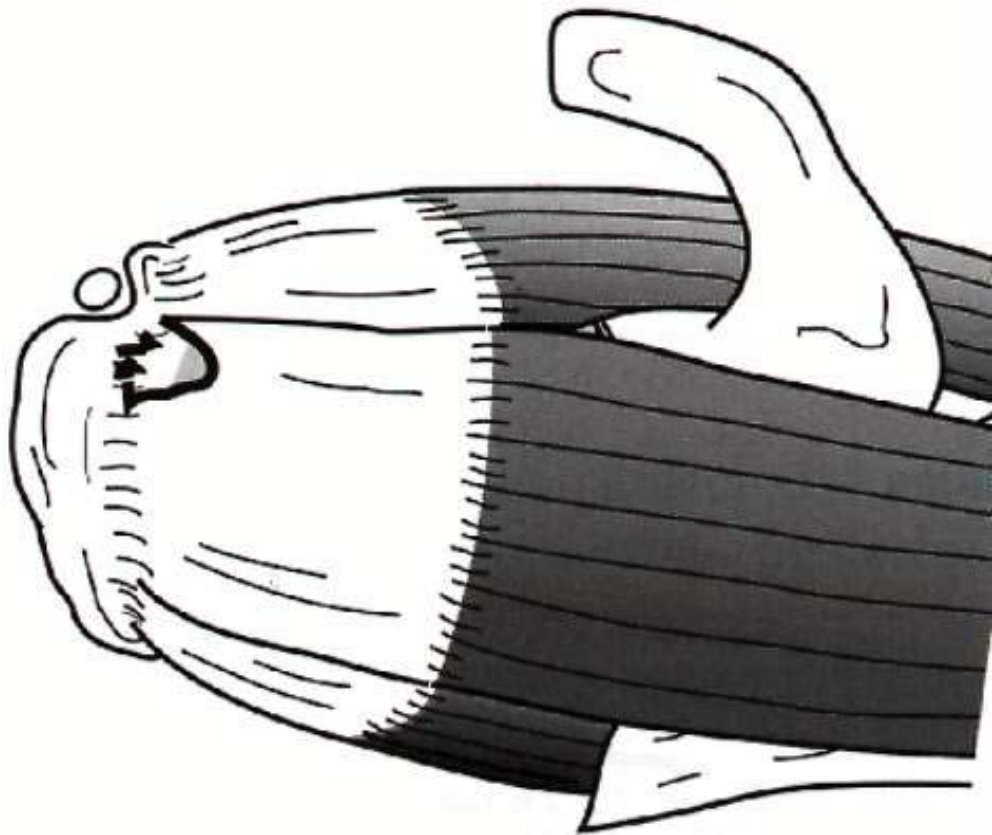


passiv frei beweglich / aktives AR Defizit

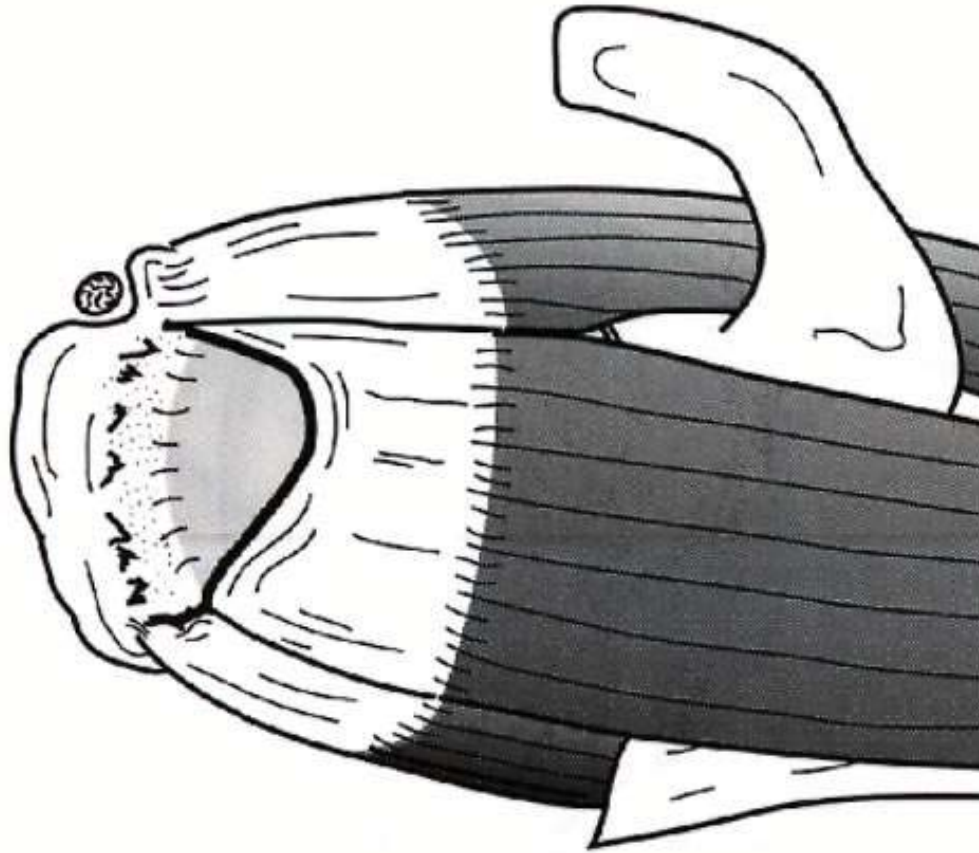
Komplette Ruptur:

klein

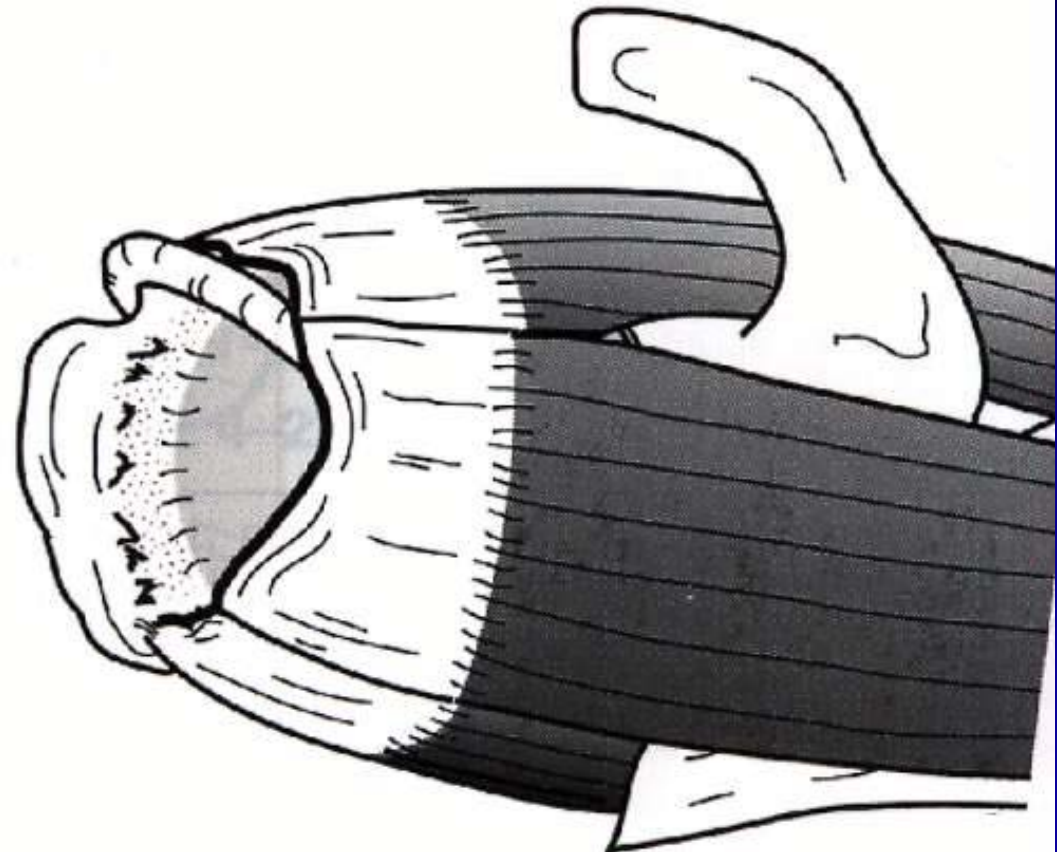
mittel



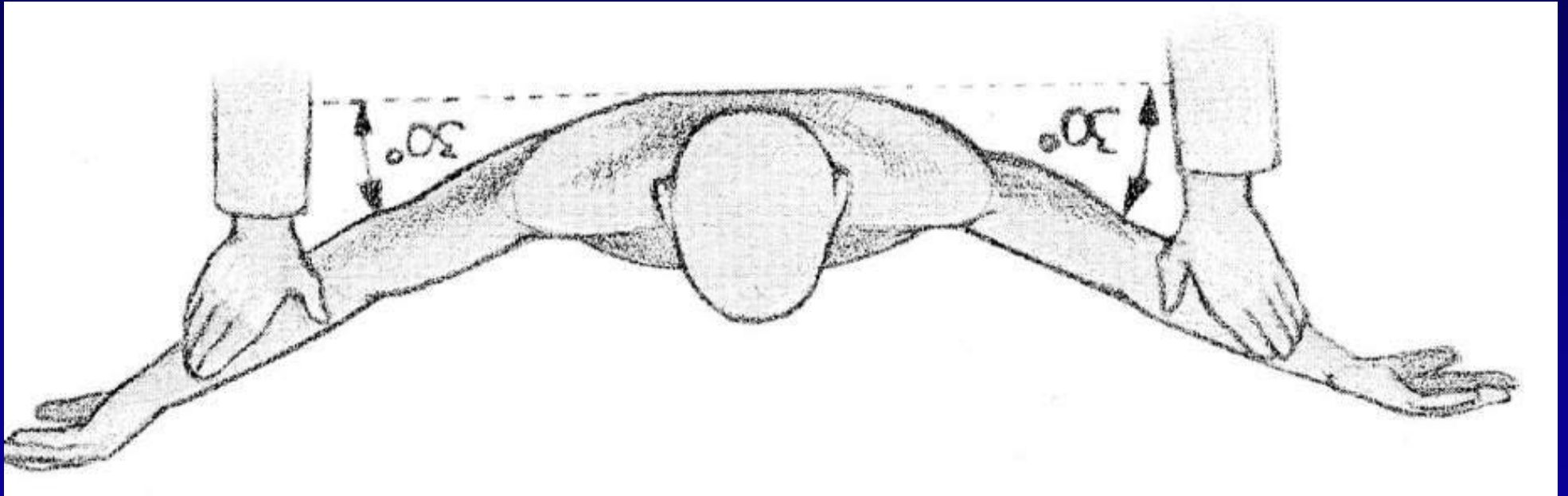
groß



Massenruptur



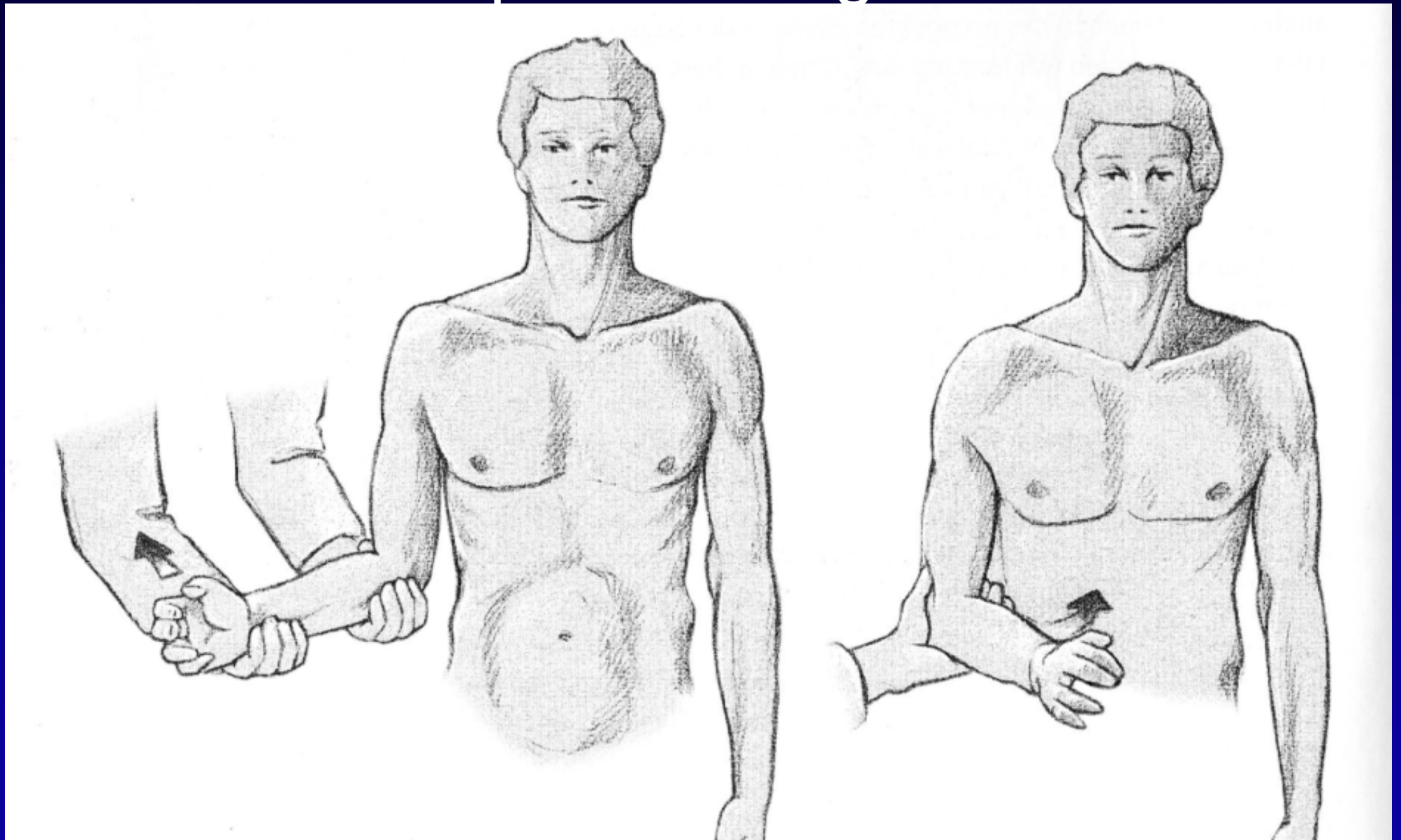
Jobe Test



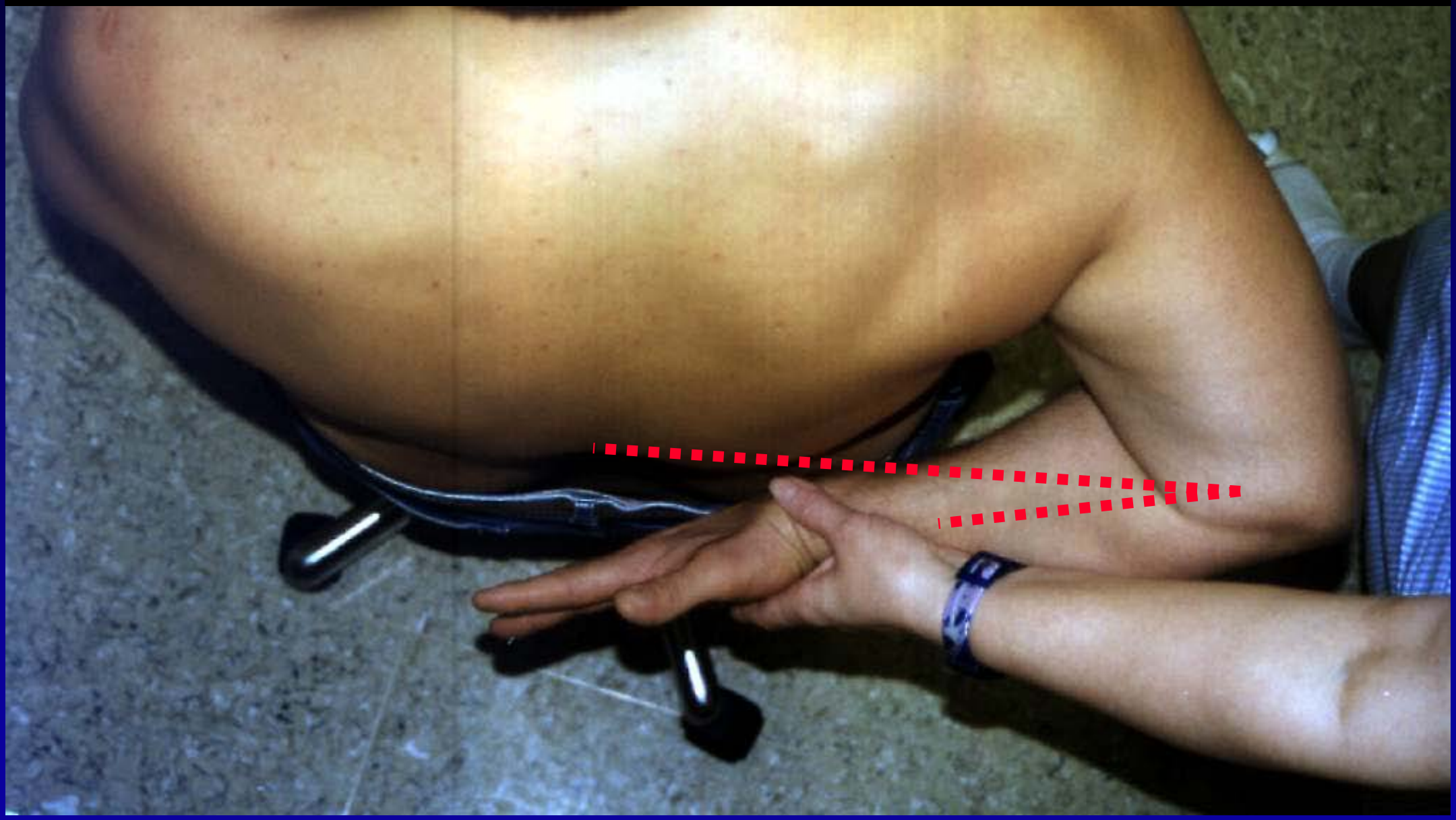
Hawkins Test



Infraspinatus Lag Test



Lift off Test (Gerber)



Subacromialraum

painful arc bei ca. 60° - 120° Abduktion



Differentialdiagnose: Schmerz im AC-Gelenk

(maximale Adduktion)





aktives Defizit / passiv frei